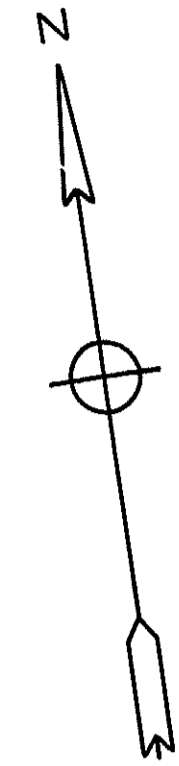


BOROUGH OF SHILOH  
CUMBERLAND COUNTY N.J.



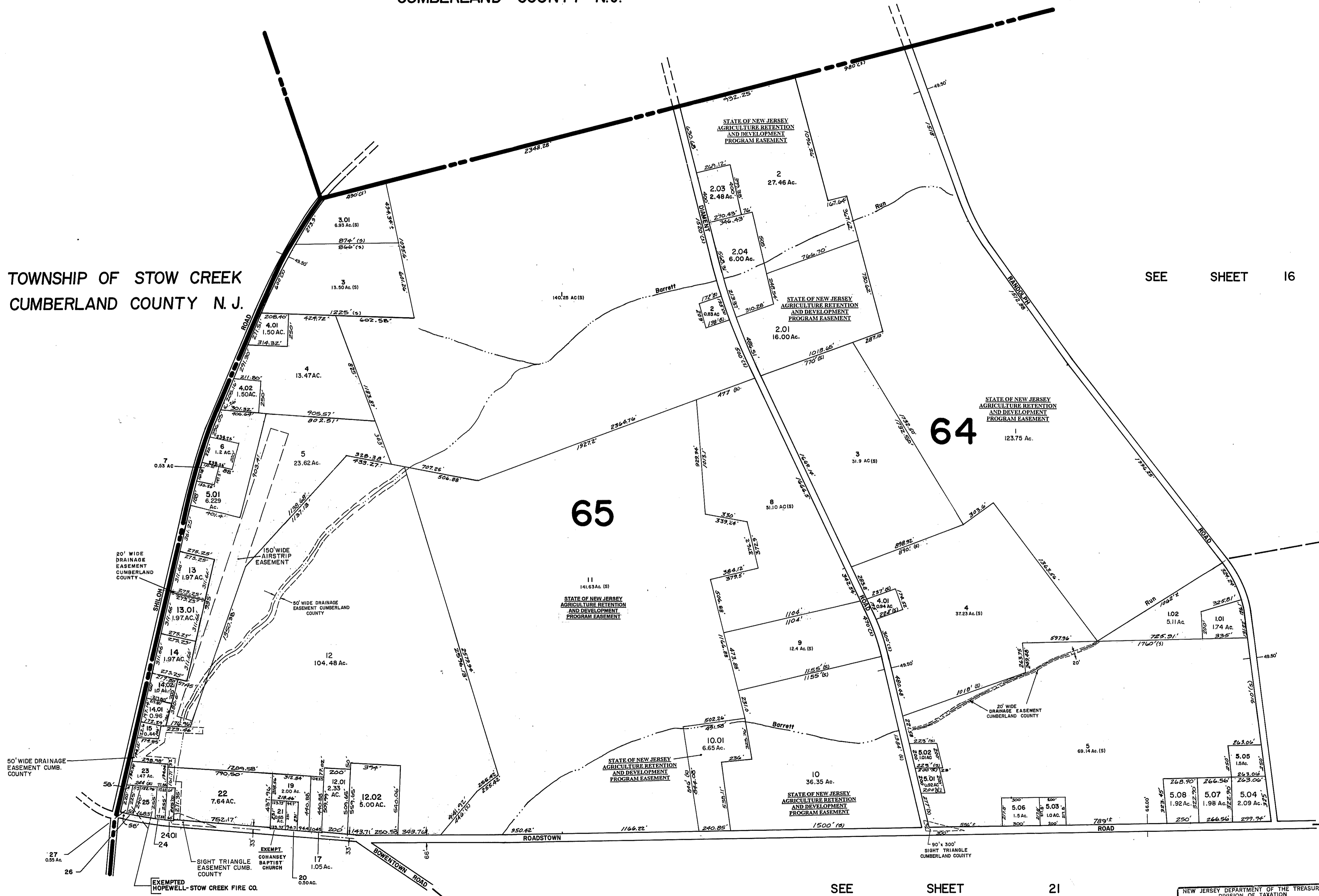
TOWNSHIP OF STOW CREEK  
CUMBERLAND COUNTY N. J.

SEE SHEET 16

64

65

SEE SHEET 17



SEE SHEET 22

SEE SHEET 21

BLOCK 65 LOT 18 IS UNASSIGNED

TAX ASSESSMENT MAP  
HOPEWELL TOWNSHIP  
CUMBERLAND COUNTY N. J.

SCALE: 1" = 400' MAY, 1976  
ALBERT A. FRALINGER JR., CONSULTING ENGINEER  
629 SHILOH PIKE, BRIDGETON, N. J. 08302

NEW JERSEY DEPARTMENT OF THE TREASURY  
DIVISION OF TAXATION  
LOCAL PROPERTY AND PUBLIC UTILITY BRANCH

APPROVED AS A TAX MAP PURSUANT TO THE  
PROVISIONS OF CHAPTER 175, LAWS OF 1913, AND  
FOR THE DIRECTOR, DIVISION OF TAXATION

*J. N. [Signature]*

BY: [Signature] LIC. # 5009 P.E. & L.S.  
DATE: 2.6.1976 SERIAL NO. 557