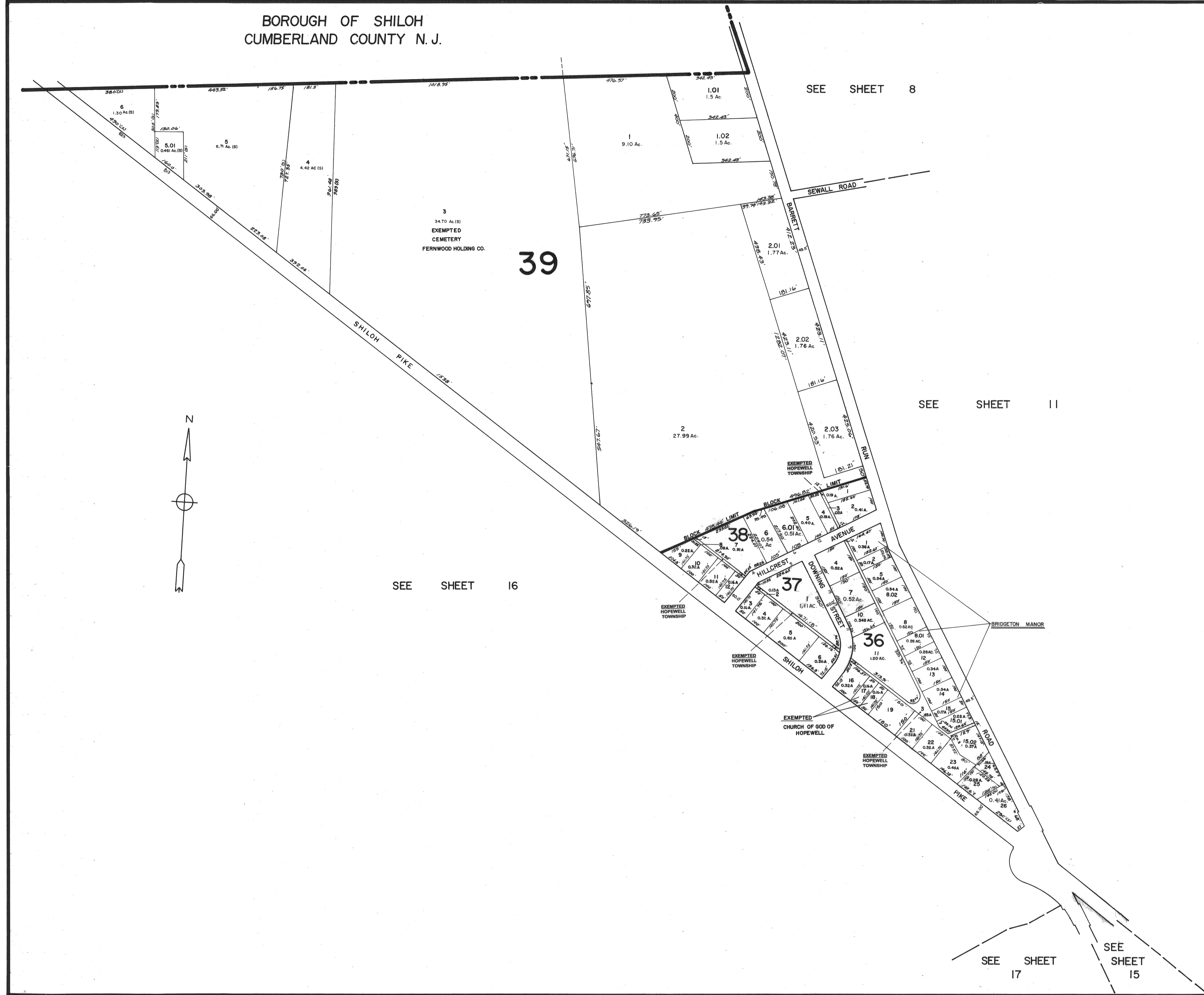


BOROUGH OF SHILOH  
CUMBERLAND COUNTY N. J.



SEE SHEET 8

SEE SHEET 11

SEE SHEET 16

SEE SHEET 17

SEE SHEET 15

NOTE:  
BLOCK 36, LOTS 6, 9 ARE UNASSIGNED.

NEW JERSEY DEPARTMENT OF THE TREASURY  
DIVISION OF TAXATION  
LOCAL PROPERTY AND PUBLIC UTILITY BRANCH  
APPROVED AS A TAX MAP PURSUANT TO THE  
PROVISIONS OF CHAPTER 175, LAWS OF 1913, etc.  
FOR THE DIRECTOR, DIVISION OF TAXATION

*J. H. Williams*  
BY: LIC. # 5009 P.E. & L.S. CHIEF  
DATE: JUL 26 1976 SERIAL NO. 557

**TAX ASSESSMENT MAP**  
**HOPEWELL TOWNSHIP**  
**CUMBERLAND COUNTY N. J.**  
SCALE: 1"=200' MAY, 1976  
ALBERT A. FRALINGER JR., CONSULTING ENGINEER  
629 SHILOH PIKE, BRIDGETON, N. J. 08302