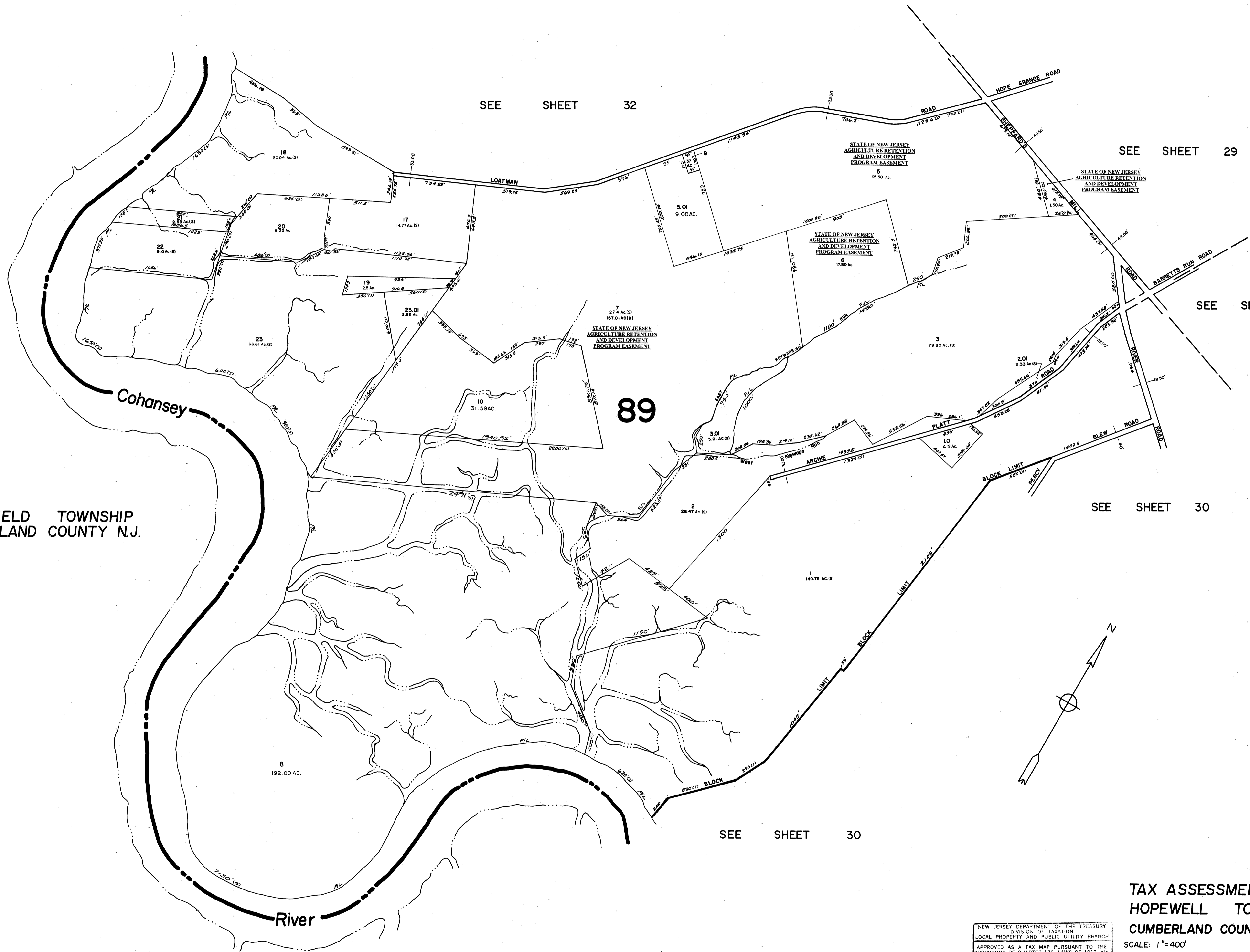


FAIRFIELD TOWNSHIP
CUMBERLAND COUNTY N.J.



SEE SHEET 32

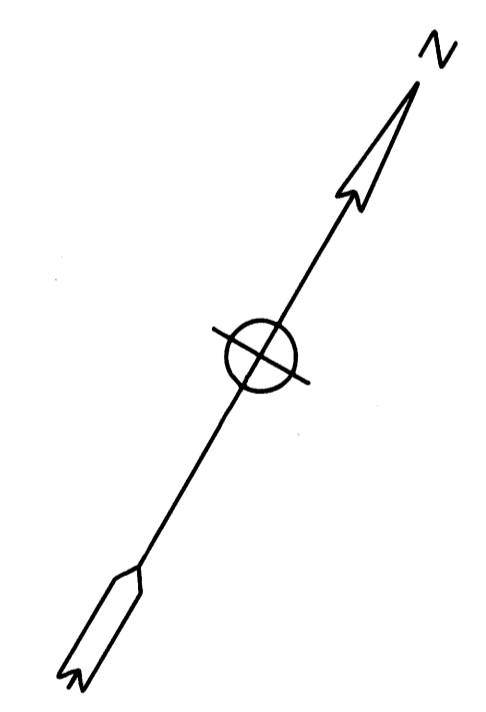
SEE SHEET 29

SEE SHEET 28

SEE SHEET 30

SEE SHEET 30

89



TAX ASSESSMENT MAP
HOPEWELL TOWNSHIP
CUMBERLAND COUNTY N.J.

SCALE: 1"=400' MAY, 1976

ALBERT A FRALINGER JR., CONSULTING ENGINEER
629 SHILOH PIKE, BRIDGETON, N.J. 08302

NEW JERSEY DEPARTMENT OF THE TREASURY
DIVISION OF TAXATION
LOCAL PROPERTY AND PUBLIC UTILITY BRANCH

APPROVED AS A TAX MAP PURSUANT TO THE
PROVISIONS OF CHAPTER 175, LAWS OF 1913, ETC.
FOR THE DIRECTOR, DIVISION OF TAXATION

J. H. DeWane

BY: *J. H. DeWane* P.E. & L.S.
DATE: III 26 1976 SERIAL NO. 557